



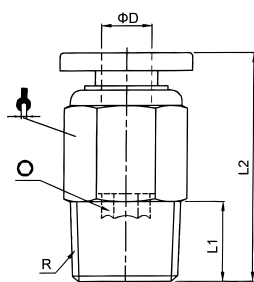
## Złącza wtykowe



- złącza wtykowe
- zawory funkcyjne
- złącza wtykowe MINI
- złącza specjalne – na zamówienie

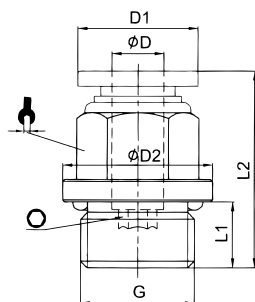


## Złącze proste z gwintem zewnętrznym - BG



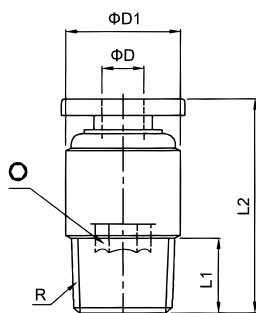
OZNACZENIE		ØD	R	L2	KLUCZ	KLUCZ
BG M54	4	M5	3.5	20.3	2	10
BG M64		M6	4	20.8	2	10
BG 184		R1/8	7.5	20	3	10
BG 144		R1/4	9.5	18	3	14
BG 384		R3/8	10.5	19	3	17
BG M56	6	M5	3.5	21	2	12
BG M66		M6	4	21	2	12
BG 186		R1/8	7.5	20.5	4	12
BG 146		R1/4	9.5	22.5	4	14
BG 386		R3/8	10.5	20.5	4	17
BG 126	R1/2	13.5	24.5	4	21	
BG 188	8	R1/8	7.5	25.5	5	14
BG 148		R1/4	9.5	24.5	5	14
BG 388		R3/8	10.5	21.5	6	17
BG 128		R1/2	13.5	25.5	6	21
BG 1810	10	R1/8	7.5	29.5	5	17
BG 1410		R1/4	9.5	31	6	17
BG 3810		R3/8	10.5	28.5	8	17
BG 1210		R1/2	13.5	26.5	8	21
BG 1812	12	R1/8	7.5	30	5	21
BG 1412		R1/4	9.5	30	6	21
BG 3812		R3/8	10.5	29	8	21
BG 1212		R1/2	13.5	32.5	8	21
BG 3814	14	R3/8	10.5	34	8	22
BG 1214		R1/2	13.5	33	10	22
BG 3816	16	R3/8	10.5	37.5	8	24
BG 1216		R1/2	13.5	39.5	10	24

## Złącze prote z gwintem zewnętrznym i uszczelką - BG



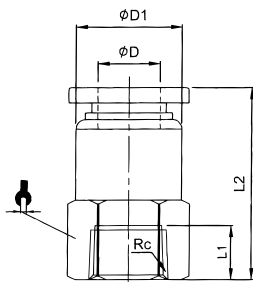
OZNACZENIE	Ø	G	D1	ØD2	L1	L2	KLUCZ	KLUCZ
BG 184G	4	G1/8	12	14	5.5	19.5	3	10
BG 144G		G1/4	12	17	7.5	18.6	3	10
BG 384G		G3/8	12	20	7.5	19.6	3	10
BG 186G	6	G1/8	14	14	5.5	22	4	12
BG 146G		G1/4	14	17	7.5	22.5	4	12
BG 386G		G3/8	14	20	7.5	20.3	4	12
BG 126G		G1/2	14	24	10	23	4	12
BG 188G	8	G1/8	16	14	5.5	25	4	14
BG 148G		G1/4	16	17	7.5	24	5	14
BG 388G		G3/8	16	20	7.5	20.5	6	14
BG 128G		G1/2	16	24	10	24	6	14
BG 1810G	10	G1/8	19.5	14	5.5	29	4	17
BG 1410G		G1/4	19.5	17	7.5	30.5	6	17
BG 3810G		G3/8	19.5	20	7.5	27	8	17
BG 1210G		G1/2	19.5	24	10	30	8	17
BG 1812G	12	G1/8	23	14	5.5	30	4	21
BG 1412G		G1/4	23	17	7.5	33	6	21
BG 3812G		G3/8	23	20	7.5	28	8	21
BG 1212G		G1/2	23	24	10	30.5	8	21
BG 3814G	14	G3/8	23	22	7.5	32.5	8	22
BG 1214G		G1/2	23	24	10	30	10	24
BG 3816G	16	G3/8	27	20	7.5	35	8	24
BG 1216G		G1/2	27	24	10	37	10	24

## Złącze proste z gwintem zewnętrznym do klucza imbusowego - BG



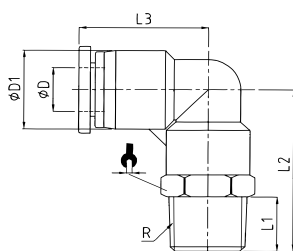
OZNACZENIE	ØD	R	L1	L2	ØD1	KLUCZ
BG M54I	4	M5	3.5	20.3	10	2
BG M64I		M6	4	20.8	10	2
BG 184I		R1/8	7.5	20	10	3
BG 144I		R1/4	9.5	18	14	3
BG M56I	6	M5	3.5	21	12	2
BG M66I		M6	4	21	12	2
BG 186I		R1/8	7.5	20.5	12	4
BG 146I		R1/4	9.5	22.5	14	4
BG 386I	8	R3/8	10.5	20.5	17	4
BG 126I		R1/2	13.5	24.5	21	4
BG 188I		R1/8	7.5	25.5	14	5
BG 148I		R1/4	9.5	24.5	14	5
BG 388I	10	R3/8	10.5	21.5	17	6
BG 128I		R1/2	13.5	25.5	21	6
BG 1810I		R1/8	7.5	29.5	17	5
BG 1410I		R1/4	9.5	31	17	6
BG 3810I	12	R3/8	10.5	28.5	17	8
BG 1210I		R1/2	13.5	26.5	21	8
BG 1812I		R1/8	7.5	31	21	5
BG 1412I		R1/4	9.5	33	21	6
BG 3812I	12	R3/8	10.5	30	21	8
BG 1212I		R1/2	13.5	32.5	21	8

## Złącze proste z gwintem wewnętrznym - BF



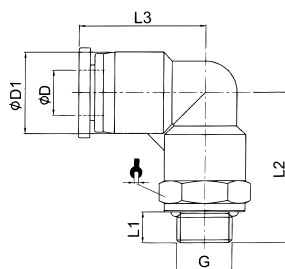
OZNACZENIE	ØD	Rc	L1	L2	ØD1	KLUCZ
BF M54	4	M5	5.5	21	10	10
BF M64		M6	6	21.5	10	10
BF 184		Rc1/8	8.5	24	10	14
BF 144		Rc1/4	11	26.5	10	17
BF M56	6	M5	5.5	21.5	12	12
BF M66		M6	6	22	12	12
BF 186		Rc1/8	8.5	24.5	12	14
BF 146		Rc1/4	11	27	12	17
BF 386	8	Rc3/8	12	28	12	21
BF 126		Rc1/2	14	30	12	24
BF 188		Rc1/8	8.5	26	14	14
BF 148		Rc1/4	11	28.5	14	17
BF 388	10	Rc3/8	12	29.5	14	21
BF 128		Rc1/2	14	31.5	14	24
BF 1810		Rc1/8	8.5	29.5	17	17
BF 1410		Rc1/4	11	32.7	17	17
BF 3810	12	Rc3/8	12	33	17	21
BF 1210		Rc1/2	14	35.7	17	24
BF 1812		Rc1/8	8.5	31	20	21
BF 1412		Rc1/4	11	33.5	20	21
BF 3812	12	Rc3/8	12	34.5	20	21
BF 1212		Rc1/2	14	36.5	20	24

## Złącze kątowe z gwintem zewnętrznym - BL



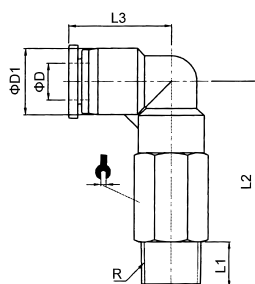
OZNACZENIE	ØD	R	L1	L2	L3	ØD1	KLUCZ
BL M54	4	M5	3.5	21.3	19	11.5	10
BL M64		M6	4	21.8	19	11.5	10
BL 184		R1/8	7.5	23.8	19	11.5	10
BL 144		R1/4	9.5	26.8	19	11.5	14
BL 384		R3/8	10.5	28.3	19	11.5	17
BL M56	6	M5	3.5	21.7	19.2	13.5	12
BL M66		M6	4	22.2	19.2	13.5	12
BL 186		R1/8	7.5	24.2	19.2	13.5	12
BL 146		R1/4	9.5	26.7	19.2	13.5	14
BL 386		R3/8	10.5	28.2	19.2	13.5	17
BL 126	R1/2	13.5	31.7	19.2	13.5	21	
BL 188	8	R1/8	7.5	27.5	22.5	15	14
BL 148		R1/4	9.5	29.5	22.5	15	14
BL 388		R3/8	10.5	31	22.5	15	17
BL 128		R1/2	13.5	34.5	22.5	15	21
BL 1810	10	R1/8	7.5	32.3	27.8	19	17
BL 1410		R1/4	9.5	34.3	27.8	19	17
BL 3810		R3/8	10.5	35.3	27.8	19	17
BL 1210		R1/2	13.5	38.8	27.8	19	21
BL 1812	12	R1/8	7.5	33.5	29.5	21.5	21
BL 1412		R1/4	9.5	36	29.5	21.5	21
BL 3812		R3/8	10.5	37	29.5	21.5	21
BL 1212		R1/2	13.5	40	29.5	21.5	21
BL 3814	14	R3/8	10.5	40.5	30.5	23.5	22
BL 1214		R1/2	13.5	43.5	30.5	23.5	22
BL 3816	16	R3/8	10.5	44	33	26.5	24
BL 1216		R1/2	13.5	47	33	26.5	24

## Złącze kątowe z gwintem zewnętrznym i uszczelką - BL



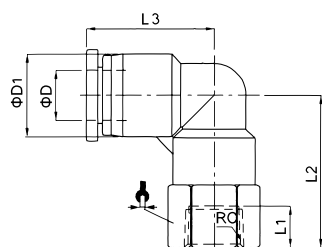
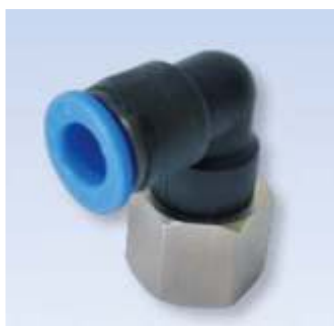
OZNACZENIE	ØD	G	L1	L2	L3	ØD1	KLUCZ
BL 184G	4	G1/8	5.5	24.3	19	11.5	14
BL 144G		G1/4	7.5	26.8	19	11.5	17
BL 186G	6	G1/8	5.5	24.2	19.2	13.5	14
BL 146G		G1/4	7.5	26.7	19.2	13.5	17
BL 386G		G3/8	7.5	27.2	19.2	13.5	20
BL 126G	G1/2	10	29.7	19.2	13.5	24	
BL 188G	8	G1/8	5.5	27	22.5	15	14
BL 148G		G1/4	7.5	29.5	22.5	15	17
BL 388G		G3/8	7.5	30	22.5	15	20
BL 128G		G1/2	10	32.5	22.5	15	24
BL 1810G	10	G1/8	5.5	31.8	27.8	19	17
BL 1410G		G1/4	7.5	34.3	27.8	19	17
BL 3810G		G3/8	7.5	34.3	27.8	19	20
BL 1210G		G1/2	10	37.8	27.8	19	24
BL 1812G	12	G1/8	5.5	33.5	29.5	21.5	21
BL 1412G		G1/4	7.5	36	29.5	21.5	21
BL 3812G		G3/8	7.5	36	29.5	21.5	21
BL 1212G		G1/2	10	39	29.5	21.5	24
BL 3814G	14	G3/8	7.5	39	30.5	23.5	22
BL 1214G		G1/2	10	42.5	30.5	23.5	24
BL 3816G	16	G3/8	7.5	42.5	33	26.5	24
BL 1216G		G1/2	10	44.5	33	26.5	24

## Złącze kątowe długie z gwintem zewnętrznym - BLL



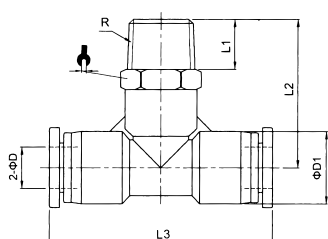
OZNACZENIE	Ø	R	L1	L2	L3	ØD1	KLUCZ
BLL M54	4	M5	3.5	33.3	19	11.5	10
BLL M64		M6	4	33.8	19	11.5	10
BLL 184		R1/8	7.5	35.8	19	11.5	10
BLL 144		R1/4	9.5	38.8	19	11.5	14
BLL M56	6	M5	3.5	35	19.2	13.5	12
BLL M66		M6	4	35.5	19.2	13.5	12
BLL 186		R1/8	7.5	38.2	19.2	13.5	12
BLL 146		R1/4	9.5	40.7	19.2	13.5	14
BLL 386		R3/8	10.5	42.2	19.2	13.5	17
BLL 126	R1/2	13.5	45.7	19.2	13.5	21	
BLL 188	8	R1/8	7.5	42.8	22.5	15	14
BLL 148		R1/4	9.5	44.8	22.5	15	14
BLL 388		R3/8	10.5	46.4	22.5	15	17
BLL 128		R1/2	13.5	48.8	22.5	15	21
BLL 1810	10	R1/8	7.5	52.3	27.8	19	17
BLL 1410		R1/4	9.5	54.3	27.8	19	17
BLL 3810		R3/8	10.5	55.3	27.8	19	17
BLL 1210		R1/2	13.5	58.8	27.8	19	21
BLL 1812	12	R1/8	7.5	57	29.5	21.5	21
BLL 1412		R1/4	9.5	59	29.5	21.5	21
BLL 3812		R3/8	10.5	60	29.5	21.5	21
BLL 1212		R1/2	13.5	63	29.5	21.5	21

## Złącze kątowe z gwintem wewnętrznym - BLF



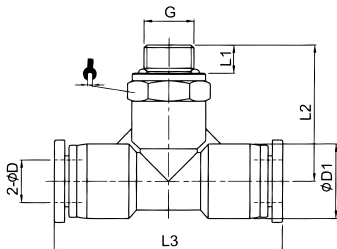
OZNACZENIE	ØD	Rc	L1	L2	L3	ØD1	KLUCZ
BLF M54	4	M5	5.5	19.5	19	11.5	10
BLF M64		M6	6	20	19	11.5	10
BLF 184		Rc1/8	8.5	23.3	19	11.5	14
BLF 144		Rc1/4	11	25.8	19	11.5	17
BLF M56	6	M5	5.5	19.2	19.2	13.5	12
BLF M66		M6	6	19.7	19.2	13.5	12
BLF 186		Rc1/8	8.5	22.7	19.2	13.5	14
BLF 146		Rc1/4	11	25.7	19.2	13.5	17
BLF 386		Rc3/8	12	27.2	19.2	13.5	21
BLF 188	8	Rc1/8	8.5	25	22.5	15	14
BLF 148		Rc1/4	11	28.5	22.5	15	17
BLF 388		Rc3/8	12	30	22.5	15	21
BLF 1410	10	Rc1/4	11	32.3	27.8	19	17
BLF 3810		Rc3/8	12	33.8	27.8	19	21
BLF 1210		Rc1/2	14	36.8	27.8	19	24
BLF 1412	12	Rc1/4	11	34.5	29.5	21.5	21
BLF 3812		Rc3/8	12	35.5	29.5	21.5	21
BLF 1212		Rc1/2	14	38	29.5	21.5	24

## Złącze T z gwintem zewnętrznym - BT



OZNACZENIE	ØD	R	L1	L2	L3	ØD1	KLUCZ
BT M54	4	M5	3.5	21.3	38	11.5	10
BT M64		M6	4	21.8	38	11.5	10
BT 184		R1/8	7.5	23.8	38	11.5	10
BT 144		R1/4	9.5	26.8	38	11.5	14
BT 384		R3/8	10.5	28.3	38	11.5	17
BT M56	6	M5	3.5	21.7	39	13.5	12
BT M66		M6	4	22.2	39	13.5	12
BT 186		R1/8	7.5	24.2	39	13.5	12
BT 146		R1/4	9.5	26.7	39	13.5	14
BT 386		R3/8	10.5	28.2	39	13.5	17
BT 126	R1/2	13.5	31.7	39	13.5	21	
BT 188	8	R1/8	7.5	27.5	45	15	14
BT 148		R1/4	9.5	29.5	45	15	14
BT 388		R3/8	10.5	31	45	15	17
BT 128		R1/2	13.5	34.5	45	15	21
BT 1810	10	R1/8	7.5	32.8	57	19	17
BT 1410		R1/4	9.5	34.8	57	19	17
BT 3810		R3/8	10.5	35.8	57	19	17
BT 1210		R1/2	13.5	39.3	57	19	21
BT 1812	12	R1/8	7.5	33.5	59	21.5	21
BT 1412		R1/4	9.5	36	59	21.5	21
BT 3812		R3/8	10.5	37	59	21.5	21
BT 1212		R1/2	13.5	40	59	21.5	21
BT 3814	14	R3/8	10.5	41	54	23.5	22
BT 1214		R1/2	13.5	44	54	23.5	22
BT 3816	16	R3/8	10.5	44	66	26.5	24
BT 1216		R1/2	13.5	47	66	26.5	24

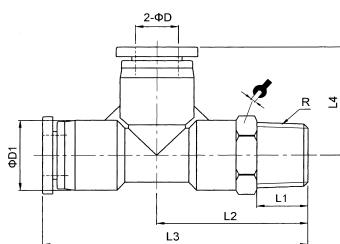
## Złącze T z gwintem zewnętrznym i uszczelką - BT



OZNACZENIE	ØD	G	L1	L2	L3	ØD1	KLUCZ
BT 184G	4	G1/8	5.5	24.3	19	11.5	14
BT 144G		G1/4	7.5	26.8	19	11.5	17
BT 186G	6	G1/8	5.5	24.2	19.2	13.5	14
BT 146G		G1/4	7.5	26.7	19.2	13.5	17
BT 386G		G3/8	7.5	27.2	19.2	13.5	20
BT 126G		G1/2	10	29.7	19.2	13.5	24
BT 188G	8	G1/8	5.5	27	22.5	15	14
BT 148G		G1/4	7.5	29.5	22.5	15	17
BT 388G		G3/8	7.5	30	22.5	15	20
BT 128G		G1/2	10	32.5	22.5	15	24
BT 1810G	10	G1/8	5.5	31.8	27.8	19	17
BT 1410G		G1/4	7.5	34.3	27.8	19	17
BT 3810G		G3/8	7.5	34.3	27.8	19	20
BT 1210G		G1/2	10	37.8	27.8	19	24
BT 1812G	12	G1/8	5.5	33.5	29.5	21.5	21
BT 1412G		G1/4	7.5	36	29.5	21.5	21
BT 3812G		G3/8	7.5	36	29.5	21.5	21
BT 1212G		G1/2	10	39	29.5	21.5	24
BT 3814G	14	G3/8	7.5	39	30.5	23.5	22
BT 1214G		G1/2	10	42.5	30.5	23.5	24
BT 3816G	16	G3/8	7.5	42.5	33	26.5	24
BT 1216G		G1/2	10	44.5	33	26.5	24

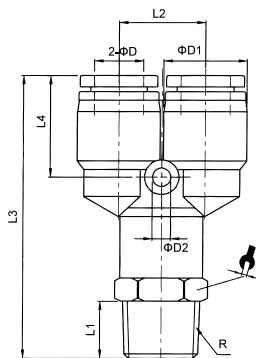


## Złącze TL z gwintem zewnętrznym - BTL



OZNACZENIE	ØD	R	L1	L2	L3	L4	ØD1	KLUCZ
BTL M54	4	M5	3.5	21.3	40.3	19	11.5	10
BTL M64		M6	4	21.8	40.8	19	11.5	10
BTL 184		R1/8	7.5	23.8	42.8	19	11.5	10
BTL 144		R1/4	9.5	26.8	45.8	19	11.5	14
BTL 384		R3/8	10.5	28.3	47.3	19	11.5	17
BTL M56	6	M5	3.5	21.7	40.9	19.2	13.5	12
BTL M66		M6	4	22.2	41.4	19.2	13.5	12
BTL 186		R1/8	7.5	24.2	43.4	19.2	13.5	12
BTL 146		R1/4	9.5	26.7	46	19.2	13.5	14
BTL 386		R3/8	10.5	28.2	47.5	19.2	13.5	17
BTL 126	R1/2	13.5	31.7	51	19.2	13.5	21	
BTL 188	8	R1/8	7.5	27.5	50	22.5	15	14
BTL 148		R1/4	9.5	29.5	52	22.5	15	14
BTL 388		R3/8	10.5	31	53.5	22.5	15	17
BTL 128		R1/2	13.5	34.5	57	22.5	15	21
BTL 1810	10	R1/8	7.5	33	61.5	27.8	19	17
BTL 1410		R1/4	9.5	35	63.5	27.8	19	17
BTL 3810		R3/8	10.5	36	64.5	27.8	19	17
BTL 1210		R1/2	13.5	39.5	68	27.8	19	21
BTL 1812	12	R1/8	7.5	33.5	63	29.5	21.5	21
BTL 1412		R1/4	9.5	36	65.5	29.5	21.5	21
BTL 3812		R3/8	10.5	37	66.5	29.5	21.5	21
BTL 1212		R1/2	13.5	40	69.5	29.5	21.5	21
BTL 3814	14	R3/8	10.5	40	70	30	23.5	22
BTL 1214		R1/2	13.5	43	73	30	23.5	22
BTL 3816	16	R3/8	10.5	44	77	33	26.5	24
BTL 1216		R1/2	13.5	47	80	33	26.5	24

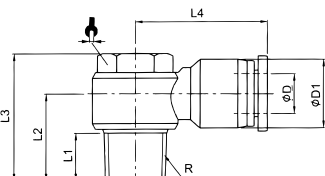
## Złącze Y z gwintem zewnętrznym - BY



OZNACZENIE	ØD	R	L1	L2	L3	L4	ØD1	ØD2	KLUCZ
BY M54	4	M5	3.5	11	40	14.5	11.5	3.2	10
BY M64		M6	4	11	40.5	14.5	11.5	3.2	10
BY 184		R1/8	7.5	11	42.5	14.5	11.5	3.2	10
BY 144		R1/4	9.5	11	45.5	14.5	11.5	3.2	14
BY 384		R3/8	10.5	11	47	14.5	11.5	3.2	17
BY M56	6	M5	3.5	13	41.5	15	13.5	3.2	12
BY M66		M6	4	13	42	15	13.5	3.2	12
BY 186		R1/8	7.5	13	44	15	13.5	3.2	12
BY 146		R1/4	9.5	13	46.5	15	13.5	3.2	14
BY 386		R3/8	10.5	13	48	15	13.5	3.2	17
BY 188	8	R1/8	7.5	15	46.5	18	15	3.2	14
BY 148		R1/4	9.5	15	48.5	18	15	3.2	14
BSY 388		R3/8	10.5	15	50	18	15	3.2	17
BY 128		R1/2	13.5	15	53.5	18	15	3.2	21
BY 1810	10	R1/8	7.5	18	56.5	21	19	4.2	17
BY 1410		R1/4	9.5	18	58.5	21	19	4.2	17
BY 3810		R3/8	10.5	18	59.5	21	19	4.2	17
BY 1210		R1/2	13.5	18	63	21	19	4.2	21
BY 1812	12	R1/8	7.5	21	59.5	21.5	21.5	4.2	21
BY 1412		R1/4	9.5	21	62	21.5	21.5	4.2	21
BY 3812		R3/8	10.5	21	63	21.5	21.5	4.2	21
BY 1212		R1/2	13.5	21	66	21.5	21.5	4.2	21

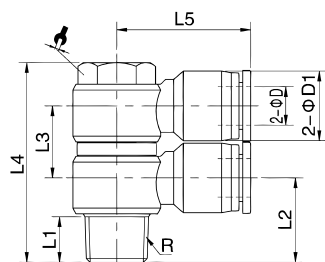


## Złącze kątowe obrotowe z gwintem zewnętrznym - BLV



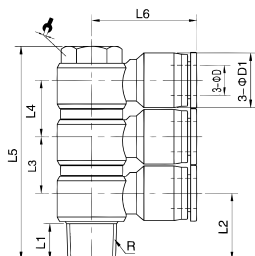
OZNACZENIE	ØD	R	L1	L2	L3	L4	ØD1	KLUCZ
BLV M54	4	M5	3.5	10.7	17.3	20.5	11.5	8
BLV 184		R1/8	7.5	15	23	23.5	11.5	12
BLV 144		R1/4	9.5	16.8	26.3	25.5	11.5	14
BLV M56	6	M5	3.5	11.7	17.3	22	13.5	8
BLV 186		R1/8	7.5	15	23	23.5	13.5	12
BLV 146		R1/4	9.5	16.2	26.3	25.4	13.5	14
BLV 386		R3/8	10.5	19	31.9	29.5	13.5	19
BLV 188	8	R1/8	7.5	15.7	23	26.5	15	12
BLV 148		R1/4	9.5	17.5	26.3	28.9	15	14
BLV 388		R3/8	10.5	19	31.9	29.8	15	19
BLV 128		R1/2	13.5	24	38.6	32.5	15	24
BLV 1810	10	R1/8	7.5	18	23	30.5	19	12
BLV 1410		R1/4	9.5	19.5	26.3	32.6	19	14
BLV 3810		R3/8	10.5	21	31.9	33	19	19
BLV 1210		R1/2	13.5	24.2	38.6	36	19	24
BLV 1412	12	R1/4	9.5	20.8	26.3	33.5	21.5	14
BLV 3812		R3/8	10.5	22.2	31.9	35.5	21.5	19
BLV 1212		R1/2	13.5	25.5	38.6	36.5	21.5	24

## Rozdzielacz kątowy obrotowy - BLV2



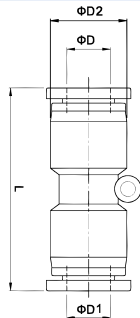
OZNACZENIE	ØD	R	L1	L2	L3	L4	L5	ØD1	KLUCZ
BLV2 184	4	R1/8	7.5	14	15	38	23.5	11.5	12
BLV2 144		R1/4	9.5	16.5	15	41.5	25.5	11.5	14
BLV2 186	6	R1/8	7.5	14	15	38	23.5	13.5	12
BLV2 146		R1/4	9.5	16.5	15	41.5	25.4	13.5	14
BLV2 386		R3/8	10.5	18.5	15.7	49.5	29.5	13.5	19
BLV2 188	8	R1/8	7.5	14.5	15	38	26.5	15	12
BLV2 148		R1/4	9.5	17.5	15	41.5	29	15	14
BLV2 388		R3/8	10.5	18.5	15.7	49.5	30	15	19
BLV2 128		R1/2	13.5	25.5	21.5	60	32.5	15	24
BLV2 1810	10	R1/8	7.5	18	19	44	30.5	19	12
BLV2 1410		R1/4	9.5	18.5	21.5	44.8	32.5	19	14
BLV2 3810		R3/8	10.5	20.5	21.5	53	33	19	19
BLV2 1210		R1/2	13.5	25.5	21.5	60	36	19	24
BLV2 1412	12	R1/4	9.5	18.5	21.5	44.8	33.5	21.5	14
BLV2 3812		R3/8	10.5	22	21.5	53	35.5	21.5	19
BLV2 1212		R1/2	13.5	25.5	21.5	60	36.5	21.5	24

## Rozdzielacz kątowy obrotowy - BLV3



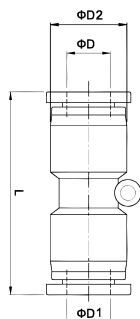
OZNACZENIE	ØD	R	L1	L2	L3	L4	L5	L6	ØD1	KLUCZ
BLV3 184	4	R1/8	7.5	14	15	15	53	23.5	11.5	12
BLV3 144		R1/4	9.5	16.5	15	15	56.5	25.5	11.5	14
BLV3 186	6	R1/8	7.5	14	15	15	53	23.5	13.5	12
BLV3 146		R1/4	9.5	16.5	15	15	56.5	25.4	13.5	14
BLV3 386		R3/8	10.5	18.5	15.7	15.7	65.3	29.5	13.5	19
BLV3 188	8	R1/8	7.5	14.5	15	15	53	26.5	15	12
BLV3 148		R1/4	9.5	17.5	15	15	56.5	29	15	14
BLV3 388		R3/8	10.5	18.5	15.7	15.7	65.3	30	15	19
BLV3 128		R1/2	13.5	25.5	21.5	21.5	81.5	32.5	15	24
BLV3 1810	10	R1/8	7.5	18	19	19	63	30.5	19	12
BLV3 1410		R1/4	9.5	18.5	21.5	21.5	69.5	32.5	19	14
BLV3 3810		R3/8	10.5	20.5	21.5	21.5	78	33	19	19
BLV3 1210		R1/2	13.5	25.5	21.5	21.5	81.5	36	19	24
BLV3 1412	12	R1/4	9.5	18.5	21.5	21.5	69.5	33.5	21.5	14
BLV3 3812		R3/8	10.5	22	21.5	21.5	78	35.5	21.5	19
BLV3 1212		R1/2	13.5	25.5	21.5	21.5	81.5	36.5	21.5	24

## Złącze proste dwustronne - BG



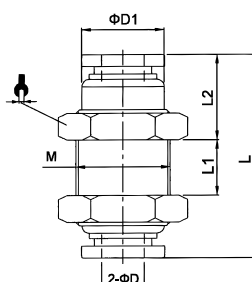
OZNACZENIE	ØD	ØD1	ØD2	L
BG 40	4	4	11.5	34
BG 60	6	6	13.5	35.5
BG 80	8	8	15	38.5
BG 100	10	10	19	48
BG 120	12	12	21.5	49
BG 140	14	14	23.5	50
BG 150	15	15	26.5	66
BG 160	16	16	26.5	66
BG 3/16	3/16	3/16	11	33
BG 1/4	1/4	1/4	13	34,5
BG 3/8	3/8	3/8	18,5	47
BG 1/2	1/2	1/2	21,5	48

## Złącze proste dwustronne redukcyjne - BG



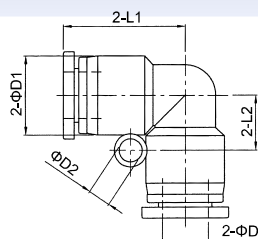
OZNACZENIE	ØD	ØD1	ØD2	L
BG 6040	6	4	13.5	35.5
BG 8040	8	4	15	38.5
BG 8060	8	6	15	38.5
BG 10060	10	6	19	46
BG 10080	10	8	19	47
BG 12060	12	6	21.5	48
BG 12080	12	8	21.5	48
BG 120100	12	10	21.5	49

## Złącze proste przegrodowe - BS



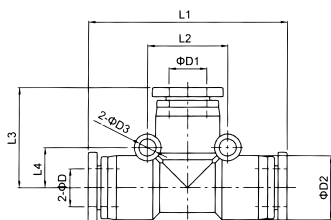
OZNACZENIE	ØD	ØD1	M	L	L1	L2	KLUCZ
BS 40	4	10	M12X1	30.5	9.5	10	14
BS 60	6	12	M14X1	31	7.5	10.6	17
BS 80	8	14	M16X1	34.5	6.5	12	19
BS 100	10	17	M20X1	41.5	11.5	12	24
BS 120	12	20	M22X1	44.5	12.5	13.5	26

## Złącze kątowe - BL



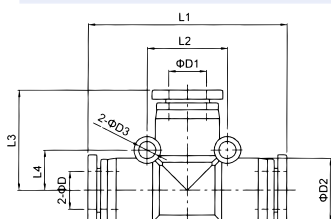
OZNACZENIE	ØD	ØD1	ØD2	L1	L2
BL 40	4	11.5	3.2	19	7
BL 60	6	13.5	3.2	19.2	8
BL 80	8	15	3.2	22.5	10
BL 100	10	19	4.2	27.8	12
BL 120	12	21.5	4.2	29.5	13.5
BL 140	14	23.5	4.2	30.5	14
BL 150	15	26.5	4.2	33	16
BL 160	16	26.5	5.0	33	16.5

## Złącze T - BT



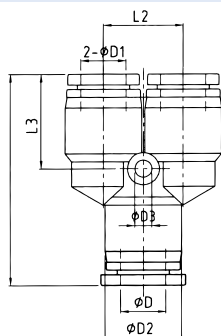
OZNACZENIE	ØD	ØD1	ØD2	ØD3	L1	L2	L3	L4
BT 40	4	4	11.5	3.2	38	14	19	7
BT 60	6	6	13.5	3.2	39	16	19.2	8
BT 80	8	8	15	3.2	45	18	22.5	9
BT 100	10	10	19	4.2	57	24	27.8	12
BT 120	12	12	21.5	4.3	59	27	29.5	13.5
BT 140	14	14	23.5	4.2	54	30	30	15
BT 150	15	15	26.5	4.2	66	31	33	16
BT 160	16	16	26.5	5.0	66	31	33	16.5

## Złącze T redukcyjne - BT



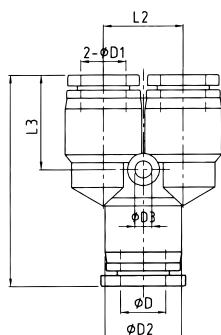
OZNACZENIE	ØD	ØD1	ØD2	ØD3	L1	L2	L3	L4
BT 6040	6	4	13.5	3.2	39	16	19.2	8
BT 8040	8	4	15	3.2	45	18	22.5	9
BT 8060	8	6	15	3.2	45	18	22.5	9
BT 10060	10	6	19	4.2	57	24	26.3	12
BT 10080	10	8	19	4.2	57	24	26.8	12
BT 12080	12	8	21.5	4.3	59	27	28.5	13.5
BT 120100	12	10	21.5	4.3	59	27	29.5	13.5

## Złącze Y - BY



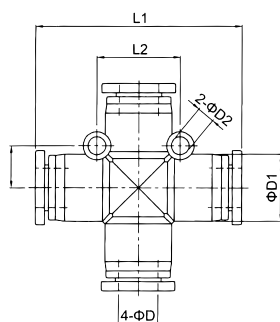
OZNACZENIE	ØD	ØD1	ØD2	ØD3	L1	L2	L3
BY 40	4	4	11.5	3.2	36.5	11	14.5
BY 60	6	6	13.5	3.2	37.5	13	15
BY 80	8	8	15	3.2	39.8	15	18
BY 100	10	10	19	4.2	50	18	21
BY 120	12	12	21.5	4.2	53	21	21.5

## Złącze Y redukcyjne - BYR



OZNACZENIE	ØD	ØD1	ØD2	ØD3	L1	L2	L3
BYR 64	6	4	13.5	3.2	37.5	13	15
BYR 84	8	4	15	3.2	39.8	15	18
BYR 86	8	6	15	3.2	39.8	15	18
BYR 106	10	6	19	4.2	39.8	18	21
BYR 108	10	8	19	4.2	50	18	21
BYR 128	12	8	21.5	4.2	53	21	21.5
BYR 1210	12	10	21.5	4.2	53	21	21.5

## Złącze krzyżowe - BX

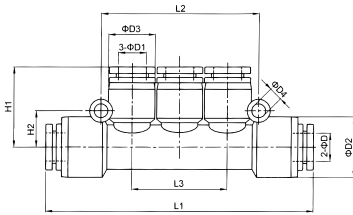


OZNACZENIE	ØD	ØD1	ØD2	L1	L2	L3
BX 40	4	11.5	3.2	38	14	7
BX 60	6	13.5	3.2	39	16	8
BX 80	8	15	3.2	45	18	9
BX 100	10	19	4.2	57	24	12
BX 120	12	21.5	4.3	59	27	13.5

## Rozdzielacz 3 - BT3



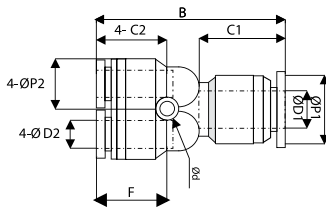
OZNACZENIE	ØD	ØD1	ØD2	ØD3	ØD4	L1	L2	L3	H1	H2
BT3 6040	6	4	14.5	13	3.2	58	36	22	19	8
BT3 8040	8	4	18.4	14.5	3.2	62	42	26	20.5	9
BT3 8060	8	6	18.4	14.5	3.2	81	48	29	24.5	9
BT3 10060	10	6	19	14.5	4.2	87	61	29	24.5	11.5
BT3 10080	10	8	19	14.5	4.2	87	61	29	24.5	11.5



## Rozdzielacz prosty 4 - BQ



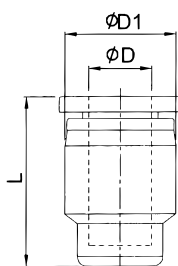
OZNACZENIE	D1	D2	B	P1	P2	C1	C2
BQ 6040	6	4	37.2	13	10.4	17.2	15
BQ 8060	8	6	40.6	14.4	13	18.4	17.2



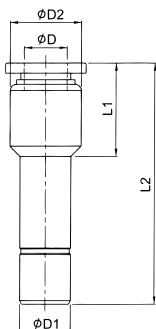
## Zaślepka - BC



OZNACZENIE	ØD	ØD1	L
BC 40	4	11.5	17.5
BC 60	6	13.5	17.7
BC 80	8	15	21.3
BC 100	10	19	25
BC 120	12	21.5	26

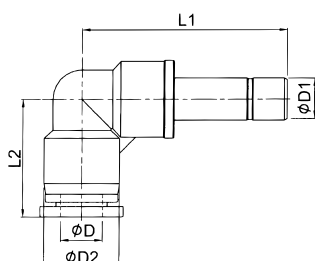


## Złącze proste z wtyczką redukcyjną - BG



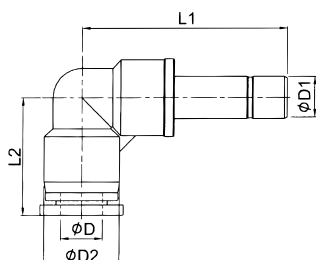
OZNACZENIE	ØD	ØD1	ØD2	L1	L2
BG 60H40	4	6	10	16	35
BG 80H40	4	8	10	13	34
BG 80H60	6	8	12	15,5	36
BG 100H60	6	10	12	16,8	41
BG 100H80	8	10	14	17,5	42
BG 120H60	6	12	13,5	13,5	38,5
BG 120H80	8	12	14	17,5	42,5
BG 120H100	10	12	17	21	46

## Złącze kątowe z wtyczką - BL



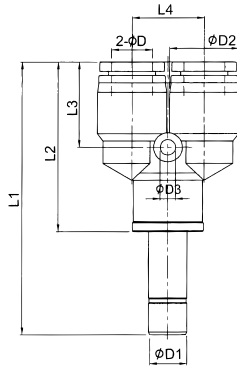
OZNACZENIE	ØD	ØD1	ØD2	L1	L2
BL 40H	4	4	11.5	33.7	19
BL 60H	6	6	13.5	34	19.2
BL 80H	8	8	15	38.5	22.5
BL 100H	10	10	19	46.8	27.8
BL 120H	12	12	21.5	49.5	29.5

## Złącze kątowe z wtyczką redukcyjną - BL



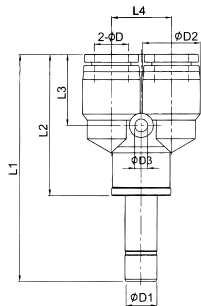
OZNACZENIE	ØD	ØD1	ØD2	L1	L2
BL 60H40	4	6	11.5	34	19
BL 80H60	6	8	13.5	35.7	19.2
BL 100H80	8	10	15	42.5	22.5
BL 120H100	10	12	19	48.3	27.8

## Złącze Y z wtyczką - BY



OZNACZENIE	ØD	ØD1	ØD2	ØD3	L1	L2	L3	L4
BY 40H	4	4	11.5	3.2	52.5	33.5	14.5	11
BY 60H	6	6	13.5	3.2	53.8	34.8	15	13
BY 80H	8	8	15	3.2	57.8	37.3	18	15
BY 100H	10	10	19	4.2	71	46.5	21	18
BY 120H	12	12	21.5	4.2	75.5	49.5	21.5	21

## Złącze Y z wtyczką redukcyjną - BY

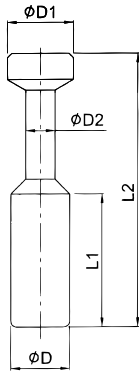


	ØD	ØD1	ØD2	ØD3	L1	L2	L3	L4
BY 60H40	4	6	11.5	3.2	52.8	33.8	14.5	11
BY 80H60	6	8	13.5	3.2	55.5	35	15	13
BY 100H80	8	10	15	3.2	62	37.3	18	15
BY 120H100	10	12	19	4.2	72.5	46.5	21	18



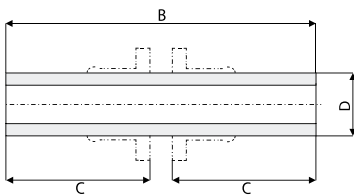


## Korek - BC



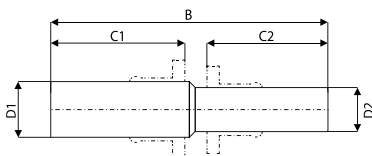
OZNACZENIE	ØD	ØD1	ØD2	L1	L2
BC 40H	4	5	3	15	28
BC 60H	6	7	3	17	33
BC 80H	8	9	4	18	37
BC 100H	10	11	5	20.5	42
BC 120H	12	13	6	23	44

## Wtyczka dwustronna - BH



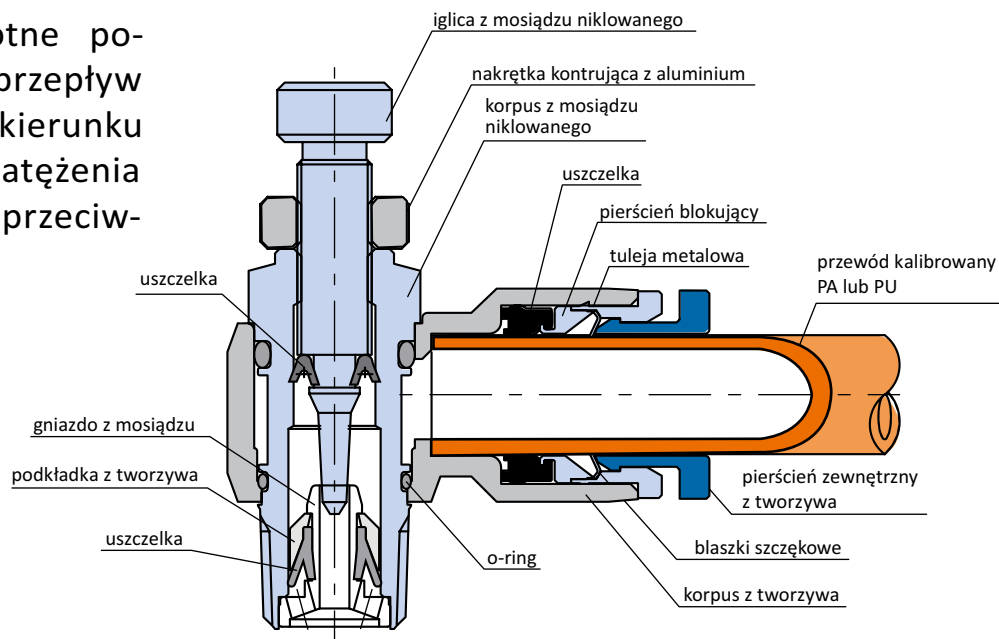
OZNACZENIE	ØD	B	C
BH 40	4	35	16
BH 60	6	37	17
BH 80	8	39.5	18.5
BH 100	10	46	21
BH 120	12	50	22.5
BH 160	16	60	25

## Wtyczka dwustronna redukcyjna - BH

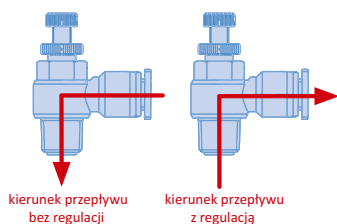
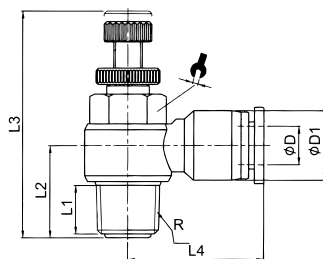


OZNACZENIE	ØD1	ØD2	B	C1	C2
BH 64	6	4	36	17	16
BH 86	8	6	39	18.5	17
BH 108	10	8	43	21	18.5
BH 1210	12	10	48	22.5	21
BH 1612	16	12	54	26.5	22.5

Zawory dławiąco-zwrotne pozwalają na swobodny przepływ powietrza w jednym kierunku oraz płynną regulację natężenia przepływu w kierunku przeciwnym.

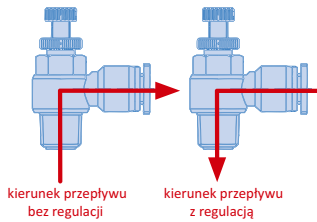
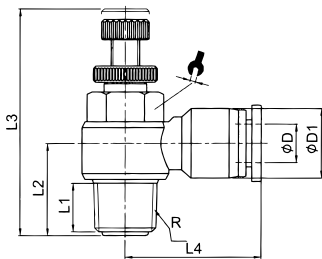


## Zawór kątowy dławiąco-zwrotny na wylocie - GRLAB



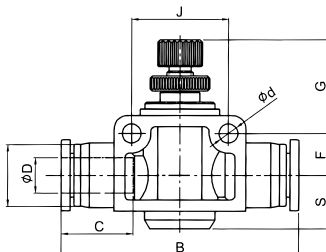
OZNACZENIE	ØD	R	L1	L2	L3 <sub>(max)</sub>	L4	ØD1	KLUCZ
GRLAB M54	4	M5	3.5	12	32	20.5	11.5	8
GRLAB 184		R1/8	6.4	14	42	23.5	11.5	12
GRLAB 144		R1/4	10	18	48	25.5	11.5	14
GRLAB M56	6	M5	3.5	12	32	22	13.5	8
GRLAB 186		R1/8	6.4	14	42	23.5	13.5	12
GRLAB 146		R1/4	10	18	48	25.4	13.5	14
GRLAB 386		R3/8	11.4	20.5	53	29.5	13.5	19
GRLAB 126	8	R1/2	14	25.5	61	32.5	13.5	24
GRLAB 188		R1/8	6.4	14.5	42	26.5	15	12
GRLAB 148		R1/4	10	19	48	28.9	15	14
GRLAB 388		R3/8	11.4	20.5	53	29.8	15	19
GRLAB 128	10	R1/2	14	25.5	61	32.5	15	24
GRLAB 1810		R1/8	6.4	17.5	42	30.3	19	12
GRLAB 1410		R1/4	10	20	48	32.6	19	14
GRLAB 3810		R3/8	11.4	22.5	53	33	19	19
GRLAB 1210	12	R1/2	14	25.5	61	36	19	24
GRLAB 1412		R1/4	10	20	48	33.5	21.5	14
GRLAB 3812		R3/8	11.4	24	53	35.5	21.5	19
GRLAB 1212		R1/2	14	30	61	36.5	21.5	24

## Zawór kątowy dławiąco-zwrotny na dolocie - GRLBB



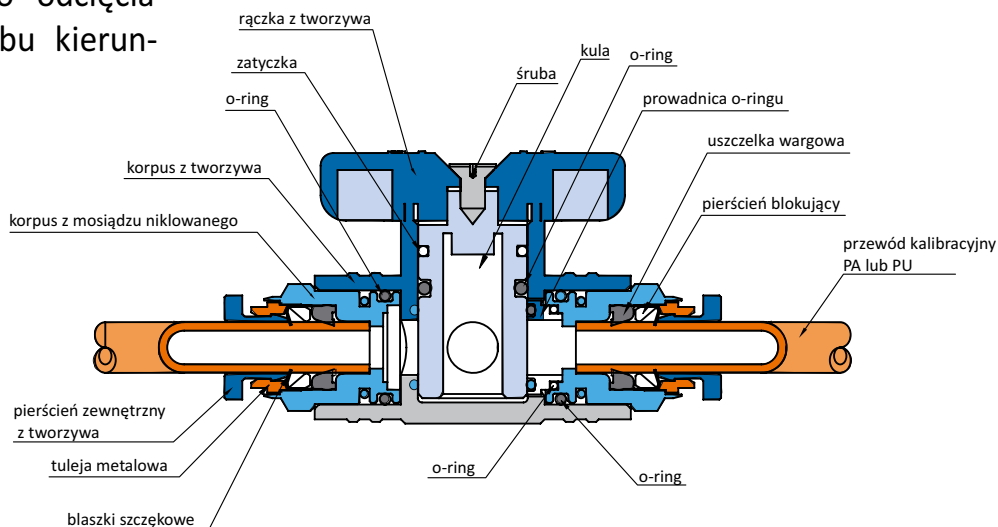
OZNACZENIE	ØD	R	L1	L2	L3 <sub>(max)</sub>	L4	ØD1	KLUCZ
GRLBB M54	4	M5	3.5	12	32	20.5	11.5	8
GRLBB 184		R1/8	6.4	14	42	23.5	11.5	12
GRLBB 144		R1/4	10	18	48	25.5	11.5	14
GRLBB M56	6	M5	3.5	12	32	22	13.5	8
GRLBB 186		R1/8	6.4	14	42	23.5	13.5	12
GRLBB 146		R1/4	10	18	48	25.4	13.5	14
GRLBB 386		R3/8	11.4	20.5	53	29.5	13.5	19
GRLBB 126		R1/2	14	25.5	61	32.5	13.5	24
GRLBB 188	8	R1/8	6.4	14.5	42	26.5	15	12
GRLBB 148		R1/4	10	19	48	28.9	15	14
GRLBB 388		R3/8	11.4	20.5	53	29.8	15	19
GRLBB 128		R1/2	14	25.5	61	32.5	15	24
GRLBB 1810	10	R1/8	6.4	17.5	42	30.3	19	12
GRLBB 1410		R1/4	10	20	48	32.6	19	14
GRLBB 3810		R3/8	11.4	22.5	53	33	19	19
GRLBB 1210		R1/2	14	25.5	61	36	19	24
GRLBB 1412	12	R1/4	10	20	48	33.5	21.5	14
GRLBB 3812		R3/8	11.4	24	53	35.5	21.5	19
GRLBB 1212		R1/2	14	30	61	36.5	21.5	24

## Zawór prosty dławiąco-zwrotny - BDRV



OZNACZENIE	ØD	ØP	B	C	G	F	S	Ød	J
BDRV 4	4	10.5	40.5	14.5	16	6.5	6.5	3.2	14
BDRV 6	6	12.5	48.7	15.5	25.5	8.5	11	4.3	20
BDRV 8	8	14	54.4	16.5	25	9.5	12	4.3	22
BDRV 10	10	18	64.3	19.5	29.5	10.5	12.5	4.3	26
BDRV 12	12	20.6	74.6	21	27.5	13	16	4.3	32

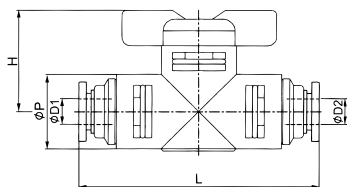
Zawory kulowe 2/2 typu otwórz/zamknij służą do ręcznego odcięcia przepływu medium w obu kierunkach.



## Zawór kulowy - BUC



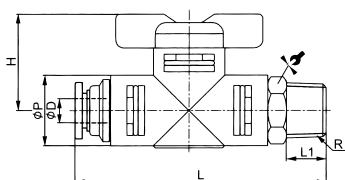
OZNACZENIE	ØD1	ØD2	ØP	L	H
BUC 60	6	6	17	56	23
BUC 80	8	8	17	58	23
BUC 100	10	10	24	78	28
BUC 120	12	12	24	80	28



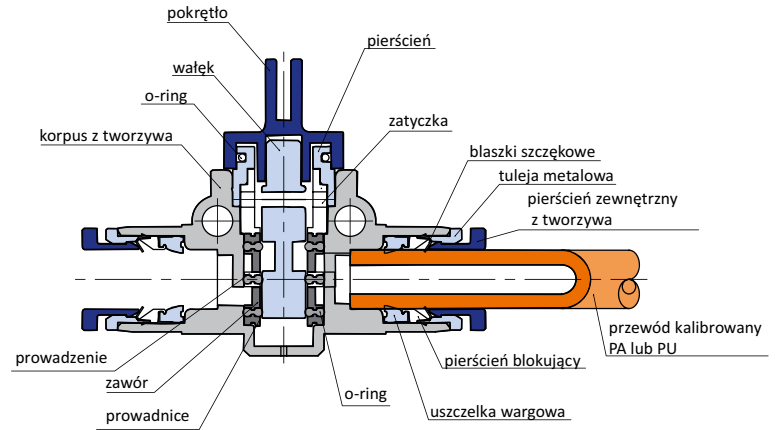
## Zawór kulowy z gwintem zewnętrznym - BBC



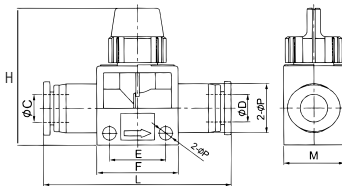
OZNACZENIE	ØD	R	ØP	L	L1	H	KLUCZ
BBC 186	6	R1/8	17	58	7.5	23	17
BBC 146		R1/4	17	60	9.5	23	17
BBC 386		R3/8	17	61	10.5	23	17
BBC 188	8	R1/8	17	59	7.5	23	17
BBC 148		R1/4	17	61	9.5	23	17
BBC 388		R3/8	17	62	10.5	23	17
BBC 1410	10	R1/4	24	82	9.5	28	24
BBC 3810		R3/8	24	83	10.5	28	24
BBC 1210		R1/2	24	86	13.5	28	24
BBC 1412	12	R1/4	24	83	9.5	28	24
BBC 3812		R3/8	24	84	10.5	28	24
BBC 1212		R1/2	24	87	13.5	28	24



Zawory odpowietrzające 3/2 służą do ręcznego odcięcia przepływu medium oraz powodują odpowietrzenie układu od strony odbiornika.

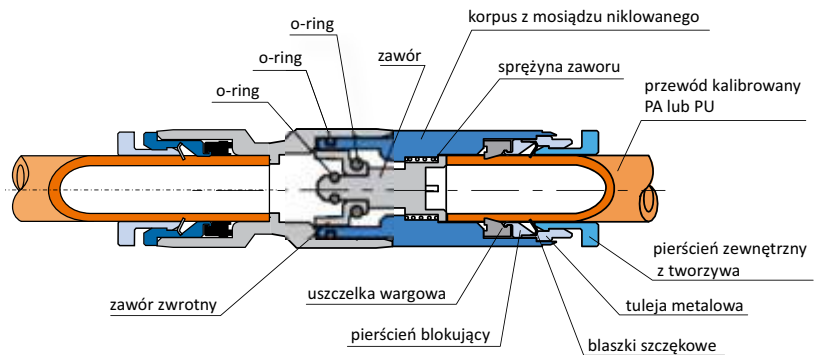


## Zawór ręczny odpowietrzający - BH3



OZNACZENIE	ØC	ØD	ØP	Ød	E	F	L	H	M
BH3 6	6	6	15	4.2	16.5	24	52	41	18
BH3 86	8	6	15	4.2	16.5	24	52	41	18
BH3 8	8	8	15	4.2	16.5	24	52	41	18
BH3 108	10	8	21.5	4.2	21.5	29	63	45	22
BH3 10	10	10	21.5	4.2	21.5	29	63	45	22
BH3 1210	12	10	21.5	4.2	21.5	29	63	45	22
BH3 12	12	12	21.5	4.2	21.5	29	63	45	22

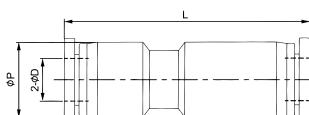
Zawory odcinające powodują zamknięcie przepływu powietrza w momencie wypięcia przewodu ze złącza.



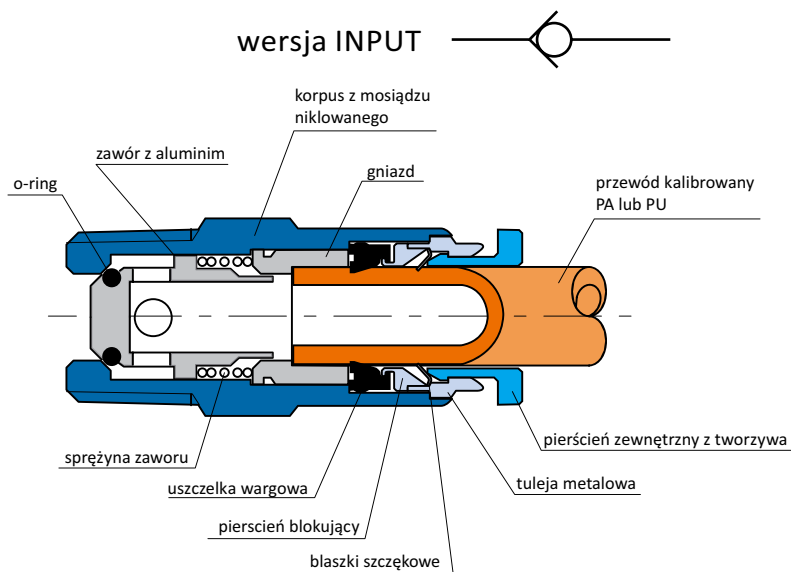
## Złącze proste odcinające - BK



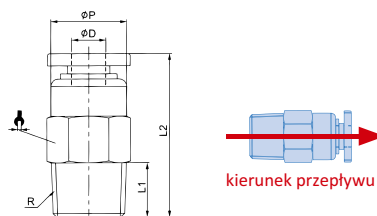
OZNACZENIE	ØD	ØP	L
BK 40	4	11.5	42
BK 60	6	13.5	46
BK 80	8	15	54
BK 100	10	19	58
BK 120	12	21.5	67



Zawory zwrotne pozwalają na swobodny przepływ powietrza w jedną stronę oraz blokują przepływ w kierunku przeciwnym.



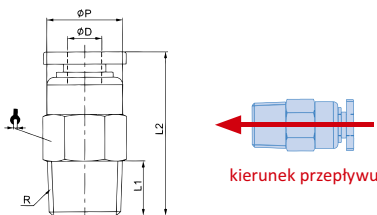
## Złącze proste z zaworem zwrotnym z gwintem zewnętrznym - BVC



wersja INPUT

OZNACZENIE	ØD	R	L1	L2	ØP	KLUCZ
RQVC M54A	4	M5	3.5	31	10	10
RQVC M64A		M6	4	31.5	10	10
RQVC 184A		R1/8	7.5	27	10	10
RQVC 186A	6	R1/8	7.5	32	12	12
RQVC 146A		R1/4	9.5	32	12	14
RQVC 188A	8	R1/8	7.5	35	14	14
RQVC 148A		R1/4	9.5	37	14	14
RQVC 3810A	10	R3/8	10.5	56	17	17
RQVC 1210A		R1/2	13.5	59	17	21
RQVC 3812A	12	R3/8	10.5	62	20	21
RQVC 1212A		R1/2	13.5	65	20	21

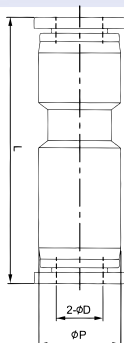
## Złącze proste z zaworem zwrotnym z gwintem zewnętrznym - BVC



wersja OUTPUT

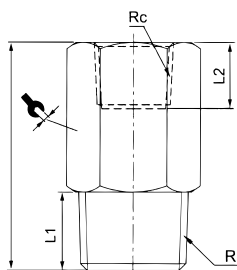
OZNACZENIE	ØD	R	L1	L2	ØP	KLUCZ
BVC M54B	4	M5	3.5	31	10	10
BVC M64B		M6	4	31.5	10	10
BVC 184B		R1/8	7.5	27	10	10
BVC 186B	6	R1/8	7.5	32	12	12
BVC 146B		R1/4	9.5	32	12	14
BVC 188B	8	R1/8	7.5	35	14	14
BVC 148B		R1/4	9.5	37	14	14
BVC 3810B	10	R3/8	10.5	56	17	17
BVC 1210B		R1/2	13.5	59	17	21
BVC 3812B	12	R3/8	10.5	62	20	21
RQVC 1212B		R1/2	13.5	65	20	21

## Złącze proste z zaworem zwrotnym - HB



OZNACZENIE	$\varnothing D$	$\varnothing P$	L
HB 40	4	11.5	42
HB 60	6	13.5	47.5
HB 80	8	15	56
HB 100	10	19	65
HB 120	12	21.5	73

## Zawór zwrotny - HCB

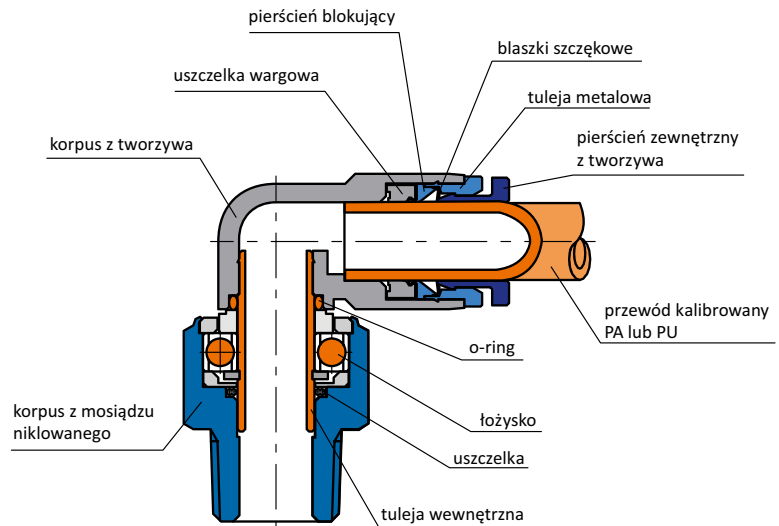


OZNACZENIE	R	Rc	L1	L2	L	KLUCZ
HCB 01-01	R1/8	Rc1/8	7.5	8.5	28	14
HCB 02-02	R1/4	Rc1/4	9.5	11	34	17
HCB 03-03	R3/8	Rc3/8	10.5	12	54	21
HCB 04-04	R1/2	Rc1/2	13.5	14	61	24

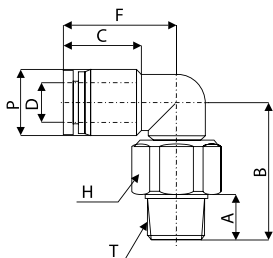


## Złącza jednołożyskowe

Złącza łożyskowe przeznaczone są do ciągłej pracy obrotowej. W zależności od ilości obrotów dostępne są wersje z jednym łożyskiem kulkowym (do 500 obrotów/min.) bądź dwoma łożyskami kulkowymi (do 1500 obrotów/min.) Ilość obrotów uzależniona jest od rozmiaru przyłączy.



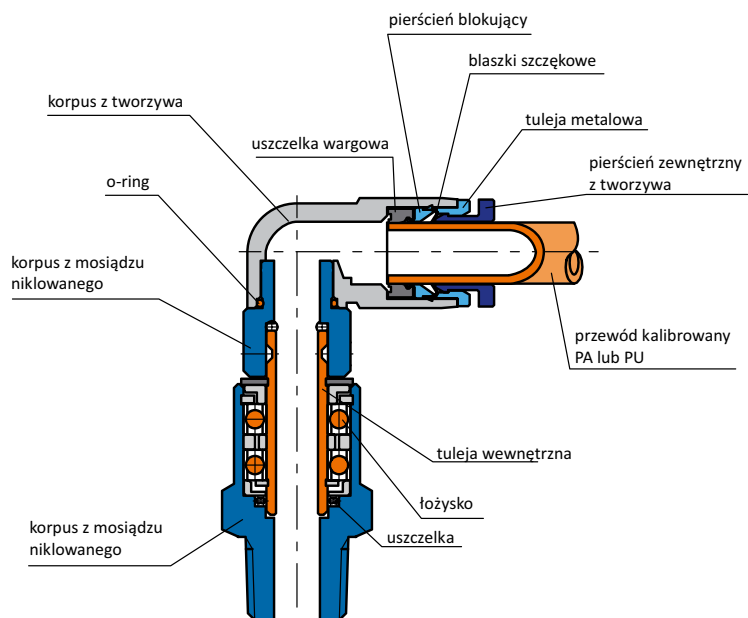
## Złącze kątowe jednołożyskowe - gwint zewnętrzny - BRL



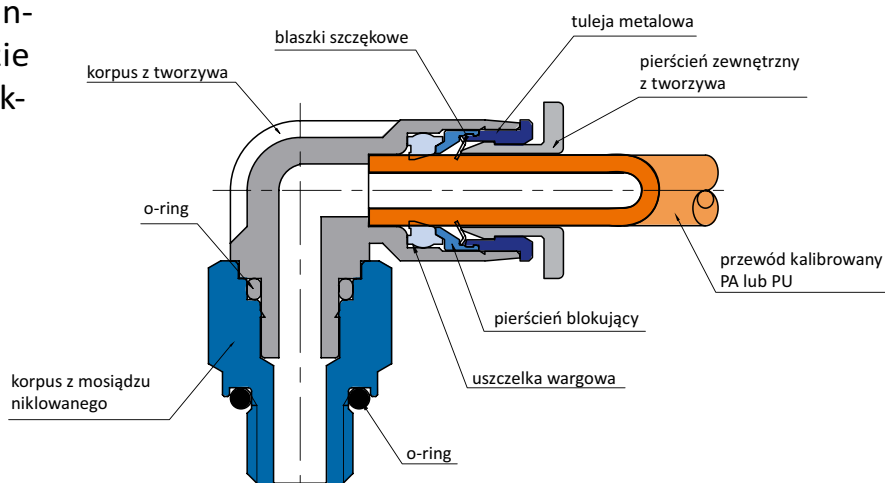
	D	T	F	P	C	A	B	H
BRL M54	4	M5	20.2	10.4	16	3.5	20.7	12*13
BRL M64	4	M6	20.2	10.4	16	4.5	21.2	12*13
BRL 184	4	R 1/8	20.2	10.4	16	8	22	12*13
BRL M56	6	M5	22.9	12.4	17	3.5	24.2	14*15
BRL M66	6	M6	22.9	12.4	17	4.5	24.2	14*15
BRL 146	6	R 1/4	22.9	12.4	17	11	26.2	14*15
BRL 186	6	R 1/8	22.9	12.4	17	8	24.2	14*15
BRL 148	8	R 1/4	25.9	14.4	18.5	11	30.6	17*18
BRL 188	8	R 1/8	25.9	14.4	18.5	8	30.6	17*18
BRL 388	8	R 3/8	25.9	14.4	18.5	12	30.6	17*18
BRL 3810	10	R 3/8	29.8	17.6	21	12	35.3	22*24
BRL 1210	10	R 1/2	29.8	17.6	21	15	36.3	22*24
BRL 3812	12	R 3/8	32.7	21	22.5	12	40.5	24*26
BRL 1212	12	R 1/2	32.7	21	22.5	15	40.5	24*26

## Złącza dwułożyskowe

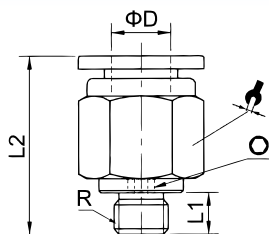
Złącza dwułożyskowe – dostępne na zamówienie.



Złączki wtykowe serii MINI są ok. 20% mniejsze od serii standardowej. Stosowane tam, gdzie wymagana jest zwarta i kompaktowa budowa elementu.

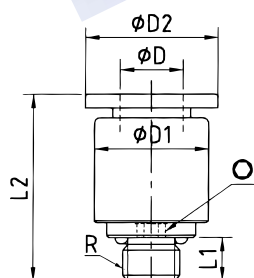


## Złącze proste z gwintem zewnętrznym z uszczelką NBR - MINI - BG



OZNACZENIE	ØD	R	L1	L2	KLUCZ	KLUCZ
BG M54C	4	M5x0.8	3.5	18.5	2	8
BG M56C	6	M5x0.8	3.5	18	2	10

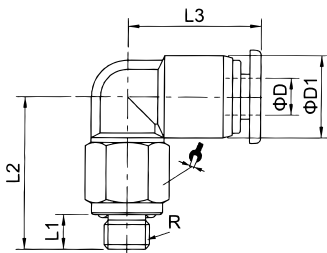
## Złącze proste z gwintem wewnętrznym i z uszczelką, do klucza imbusowego - MINI - BG



OZNACZENIE	ØD	R	L1	L2	ØD1	ØD2	KLUCZ
BG M54IC	4	M5x0.8	3.5	18	8	10	2
BG M56IC	6	M5x0.8	3.5	18	10	11.5	2

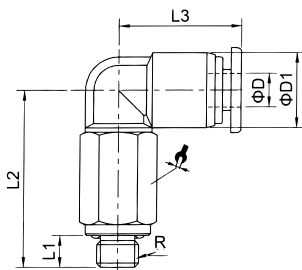
## Złącze kątowe z gwintem zewnętrznym i uszczelką - MINI - BL

OZNACZENIE	ØD	R	L1	L2	L3	ØD1	KLUCZ
BL M54C	4	M5X0.8	3.5	16.5	14	9.5	8
BL M56C	6	M5X0.8	3.5	17.3	16	11.5	8



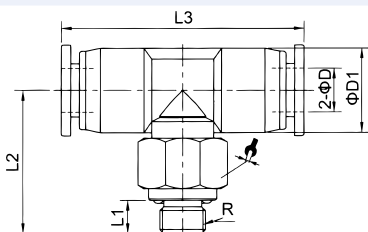
## Złącze kątowe długie z gwintem zewnętrznym i uszczelką - MINI - BLL

OZNACZENIE	ØD	R	L1	L2	L3	ØD1	KLUCZ
BLL M54C	4	M5X0.8	3.5	28	14	9.5	8
BLL M56C	6	M5X0.8	3.5	29.5	16	11.5	8



## Złącze T z gwintem zewnętrznym i uszczelką - MINI - BT

OZNACZENIE	ØD	R	L1	L2	L3	ØD1	KLUCZ
BT M54C	4	M5X0.8	3.5	16.5	28	9.5	8
BT M56C	6	M5X0.8	3.5	17.3	32	11.5	8



## Złącze proste przegrodowe - gwint wewnętrzny



gwint	1/8"	1/4"	3/8"	1/2"
4mm	...184	...144	...384	
6mm	...186	...146	...386	
8mm	...188	...148	...388	...128
10mm	...1810	...1410	...3810	...1210
12mm	...1812	...1412	...3812	...1212

Przykład: BSF 1410

## Rozdzielacz kątowy obrotowy D4



gwint	1/8"	1/4"	3/8"	1/2"
4mm	...184	...144	...384	
6mm	...186	...146	...386	
8mm	...188	...148	...388	...128
10mm		...1410	...3810	...1210
12mm		...1412	...3812	...1212

Przykład: BLV4 386

## Złącze kątowe obrotowe - gwint zew./wew.



gwint	M5	1/8"	1/4"	3/8"	1/2"
4mm	...M54	...184			
6mm	...M56	...186	...146		
8mm		...188	...148	...388	
10mm			...1410	...3810	
12mm			...3812	...1212	

Przykład: BTF 3812

## Rozdzielacz kątowy obrotowy D6



gwint	1/8"	1/4"	3/8"	1/2"
4mm	...184	...144	...384	
6mm	...186	...146	...386	
8mm	...188	...148	...388	...128
10mm		...1410	...3810	...1210
12mm		...1412	...3812	...1212

Przykład: BLV6 1210

## Złącze Y kątowe obrotowe - gwint zewnętrzny



gwint	M5	1/8"	1/4"	3/8"	1/2"
4mm	...M54				
6mm		...186			
8mm			...148		
10mm				...3810	
12mm					...1212

Przykład: BYLV 186

## Rozdzielacz typu T D3 - gwint zewnętrzny



gwint	1/8"	1/4"	3/8"
6mm-4mm	...1864		
8mm-4mm		...1484	
8mm-6mm		...1486	
10mm-8mm			...38108

Przykład: BT3 1486

## Złącze Y kątowe obrotowe - gwint zew./wew.



gwint	M5	1/8"	1/4"	3/8"	1/2"
4mm	...M54				
6mm		...186			
8mm			...148		
10mm				...3810	
12mm					...1212

Przykład: BYTF 148

## Rozdzielacz typu T D3 - z wtyczką



gwint	6mm	8mm	10mm
4mm	...60H40	...80H40	
6mm		...80H60	
8mm			...100H80

Przykład: BT3 100H80

## Rozdzielacz prosty D4 - gwint zewnętrzny



gwint	1/8"	1/4"
4mm	...184	...144
6mm	...186	

Przykład: BQ 144

## Wtyczka z gwintem zewnętrznym



gwint	M5	1/8"	1/4"	3/8"	1/2"
4mm	...M54H	...184H	...144H		
6mm	...M56H	...186H	...146H	...386H	
8mm		...188H	...148H	...388H	
10mm			...1410H	...3810H	...1210H
12mm			...1412H	...3812H	...1212H
16mm				...3816H	...1216H

Przykład: BG 148H

## Zawór obrotowy dławiąco-zwrotny na wylocie



gwint \ wąż	M5	1/8"	1/4"	3/8"	1/2"
4mm	...M54	...184	...144		
6mm	...M56	...186	...146	...386	
8mm		...188	...148	...388	...128
10mm			...1410	...3810	...1210
12mm			...1412	...3812	...1212

Przykład: GRAB 146

## Złącze kątowe odcinające - gwint zewnętrzny



gwint \ wąż	M5	1/8"	1/4"	3/8"	1/2"
4mm	...M54	...184			
6mm	...M56	...186	...146		
8mm		...188	...148	...388	
10mm			...1410	...3810	...1210
12mm				...3812	

Przykład: BKL M54

## Zawór ręczny odpowietrzający - gwint zewnętrzny



gwint	1/8"	1/4"	3/8"	1/2"
1/8"	...1818	...1418		
1/4"		...1414	...3814	
3/8"			...3838	...1238
1/2"				...1212

Przykład: BH3 1414

## Złącze proste jednołożyskowe - gwint zewnętrzny



gwint \ wąż	M5	1/8"	1/4"	3/8"	1/2"
4mm	...M54	...184			
6mm		...186	...146		
8mm		...188	...148	...388	
10mm				...3810	...1210
12mm				...3812	...1212

Przykład: BR 3810

## Zawór ręczny odpowietrzający - gwint zewnętrzny



gwint \ wąż	1/8"	1/4"	3/8"	1/2"
6mm	...186	...146	...386	
8mm	...188	...148	...388	
10mm		...1410	...3810	...1210
12mm		...1412	...3812	...1212

Przykład: BHA3 148

## Złącze proste dwułożyskowe - gwint zewnętrzny



gwint \ wąż	M5	1/8"	1/4"	3/8"	1/2"
4mm	...M54	...184			
6mm		...186	...146		
8mm		...188	...148		
10mm				...3810	...1210
12mm				...3812	...1212

Przykład: BRH 1212

## Zawór ręczny odpowietrzający - gwint zewnętrzny



gwint \ wąż	1/8"	1/4"	3/8"	1/2"
6m	...186	...14	...386	
8m	...188	...14	...388	
10m		...1410	...3810	...1210
12mm		...1412	...3812	...1212

Przykład: BHE3 388

## Złącze kątowe dwułożyskowe - gwint zewnętrzny



gwint \ wąż	M5	1/8"	1/4"	3/8"	1/2"
4mm	...M54	...184			
6mm		...186	...146		
8mm		...188	...148		
10mm				...3810	...1210
12mm				...3812	...1212

Przykład: BRHL 184

## Złącze proste odcinające - gwint zewnętrzny



gwint \ wąż	1/8"	1/4"	3/8"	1/2"
4mm	...184			
6mm	...186	...146		
8mm		...148	...388	
10mm		...1410	...3810	...1210
12mm			...3812	

Przykład: BK 186

## Łącznik dwułożyskowy - gwint zew./wew.



gwint	1/8"	1/4"	3/8"	1/2"
1/8"	...1818	...1418		
1/4"	...1814	...1414		
3/8"			...3838	...1238
1/2"			...3812	...1212

Przykład: BGFS 3812





**Technika połączeń - Befestigungstechnik - Fastening systems - Крепежная техника.**



**BizeA** Sp. z o.o.

Tomice, ul. Europejska 4, 05-532 Baniocha k. Warszawy

tel. 22 244 17 00 ; fax 22 244 52 77

e-mail: [info@bizea.com.pl](mailto:info@bizea.com.pl)

[www.bizea.pl](http://www.bizea.pl)

**Dział Serwisu i Automatykcji**

tel. 22 244 17 26 ; fax 22 213 07 55

e-mail: [serwis@bizea.com.pl](mailto:serwis@bizea.com.pl)

Zszywki, sztyfty, gwoździe, narzędzia i urządzenia pneumatyczne, kleje topliwe, akcesoria pneumatyczne.